



nonStick red

The new bipolar forceps from KLS Martin –
with nonStick effect and a revolutionary
ergonomic design



revolutionary
ergonomic
design

nonStick red

The new bipolar forceps from KLS Martin –
with nonStick effect and a revolutionary
ergonomic design

“With the new KLS Martin bipolar nonStick red forceps, tissue sticking to the tips of the instrument is definitely a problem of the past.

Especially for operations involving extremely fine dissection (such as parotid and thyroid interventions or microvascular tissue transfer), the use of this new generation of bipolar forceps provides significant advantages due to their exceptional haptic quality: minimized risk of procedures, gentler operating technique and shorter operating times. The tips of the instrument need to be cleaned considerably less often during interventions and the cleaning process itself is much faster as well.

We simply wouldn't like to do without these forceps.”

Dr. Paul-Stefan Mauz (M.D.)
Senior Consultant
Tübingen University Hospital
Department of Otorhinolaryngology



nonStick red

The new bipolar forceps from KLS Martin – with nonStick effect and a revolutionary ergonomic design

The new generation of bipolar forceps

Who hasn't encountered this everyday operating situation when working with conventional bipolar forceps? The tissue tends to stick to the tips of the instrument during coagulation and when withdrawing the instrument, the coagulated tissue is torn open again.

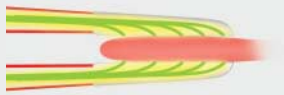
The result is renewed bleeding. Now, this unwelcome effect can be prevented by using KLS Martin nonStick red, the new and innovative generation of bipolar forceps – the coagulated tissue is no longer disrupted when opening the instrument.

What's more, the cumbersome and time-consuming process of cleaning the tips of the forceps during operations is largely eliminated at the same time. This means fewer interruptions of the surgical procedure and corresponding time savings.

nonStick red



Coagulating produces so-called "hot spots".

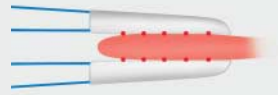


Thanks to the special alloy used for the tips of the forceps, the heat can be discharged quickly and effectively.



This prevents the tissue from sticking to the tips of the forceps.

Standard forceps



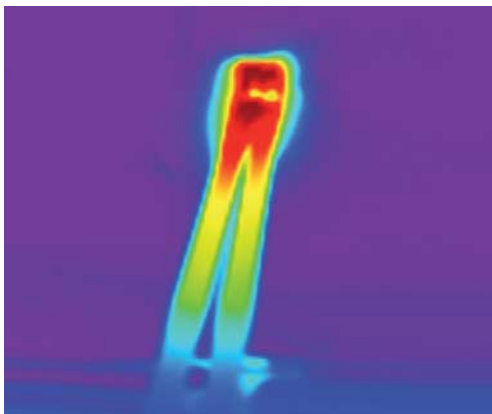
Coagulating produces so-called "hot spots".



As the heat cannot be discharged, overheating is the inevitable result.



Tissue tends to stick to the tips of the forceps. When opening the instrument, charred tissue is torn off in the process.

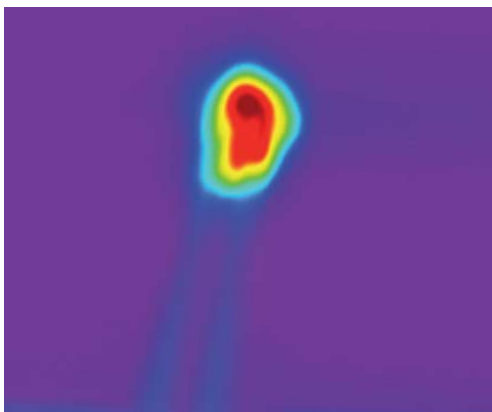


Thermography image of the nonStick red forceps

Improved heat conductivity

A special feature does the trick – polished noble-metal tips offering excellent heat conductivity. Thanks to this property, the tissue cannot adhere to the tips of the forceps.

The heat is discharged from the tips quickly and effectively. And what's more, the nonStick effect will last because the tips are not merely coated, but made of solid noble metal.



Thermography image of a standard bipolar forceps

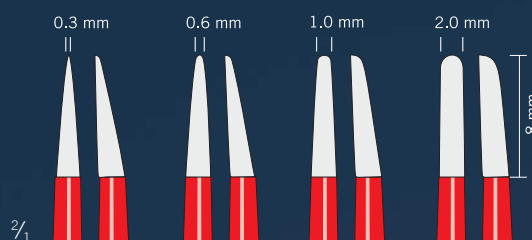
Heat conductivity standard forceps

The thermography image shown here demonstrates that in the case of a standard bipolar forceps, the heat becomes trapped at the tips of the forceps. The heat cannot be quickly and effectively transported away. The tips of the forceps become clogged with tissue as a result.

nonStick red

Variety of models

The new bipolar nonStick red forceps from KLS Martin are available in all usual sizes for the most diverse fields of use.



The tips of the forceps

The tips are precision-made and available in different sizes for extremely accurate surgical use. By adjusting the pressure applied, the user can coagulate merely with the tips or by using the full surfaces.

The polished noble-metal tips are excellent heat conductors preventing tissue adhesion.



marSIGHT

The special geometry of the forceps tips gives the surgeon an unobstructed view of the surgical site and the tissue to be coagulated. Moreover, the tips enable you to grasp tissue with utmost precision. Don't miss out on the experience!

The models featuring tips with marSIGHT geometry are clearly marked in this brochure.



revolutionary ergonomic design



Guiding mechanism

The guiding mechanism ensures the accurate, highly parallel closure of the pre-tensioned forceps and prevents “tip spread” as well. This, in turn, prevents fatigue in the user’s hand and facilitates the dissecting process.



Connection

The bipolar nonStick red forceps can be used with any commonly available HF generator. Special connecting cables are available for this purpose.



marGRIP

The ergonomic handle surface provides for secure handling and prevents fatigue in the user’s hand.



Shank geometry

Thanks to the view-optimized geometry of the shanks of the forceps, the surgeon’s hand and the cable connector are kept out of the surgical field. This is particularly advantageous when working under the operating microscope.

revolutionary
ergonomic
design

Bipolar forceps, KLS Martin nonStick red, straight



Tip width	Length	Item No.
pointed		
0.3 mm	12 cm/4 3/4"	80-982-12-04
0.3 mm	17 cm/6 1/4"	80-982-17-04
0.3 mm	20 cm/8"	80-982-20-04
0.3 mm	23 cm/9"	80-982-23-04
blunt		
0.6 mm	12 cm/4 3/4"	80-984-12-04
0.6 mm	17 cm/6 1/4"	80-984-17-04
0.6 mm	20 cm/8"	80-984-20-04
blunt		
1.0 mm	12 cm/4 3/4"	80-986-12-04
1.0 mm	17 cm/6 1/4"	80-986-17-04
1.0 mm	20 cm/8"	80-986-20-04
1.0 mm	23 cm/9"	80-986-23-04
blunt		
2.0 mm	17 cm/6 1/4"	80-988-17-04
2.0 mm	20 cm/8"	80-988-20-04
2.0 mm	23 cm/9"	80-988-23-04
2.0 mm	30 cm/11 3/4"	80-988-30-04

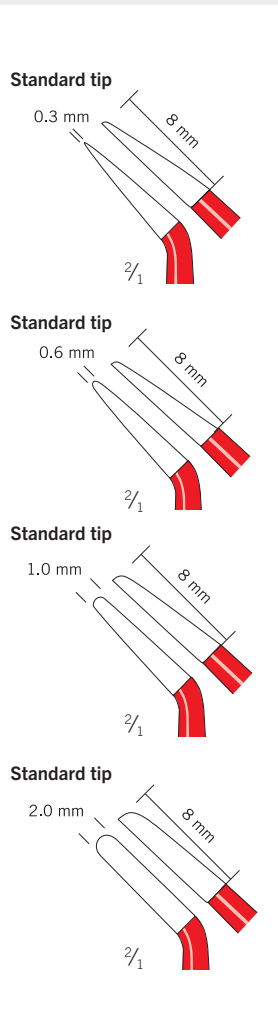
1/1

80-982-12-04
12 cm/4 3/4"
pointed, 0.3 mm

Example illustration

revolutionary
ergonomic
design

Bipolar forceps, KLS Martin nonStick red, angled



Tip width	Length	Item No.
pointed		
0.3 mm	12 cm/4 3/4"	80-983-12-04
0.3 mm	17 cm/6 1/4"	80-983-17-04
blunt		
0.6 mm	12 cm/4 3/4"	80-985-12-04
0.6 mm	17 cm/6 1/4"	80-985-17-04
0.6 mm	20 cm/8"	80-985-20-04
blunt		
1.0 mm	12 cm/4 3/4"	80-987-12-04
1.0 mm	17 cm/6 1/4"	80-987-17-04
1.0 mm	20 cm/8"	80-987-20-04
1.0 mm	23 cm/9"	80-987-23-04
blunt		
2.0 mm	17 cm/6 1/4"	80-989-17-04
2.0 mm	20 cm/8"	80-989-20-04
2.0 mm	23 cm/9"	80-989-23-04
2.0 mm	25 cm/9 3/4"	80-989-25-04
2.0 mm	28 cm/11"	80-989-28-04
2.0 mm	30 cm/11 3/4"	80-989-30-04

1/1

80-983-12-04
12 cm/4 3/4"
pointed, 0.3 mm

Example illustration



Example illustration

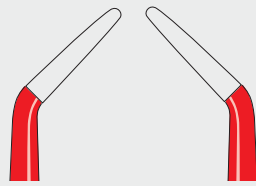
revolutionary
ergonomic
design

Bipolar forceps, KLS Martin nonStick red, bayonet-shaped

	Tip width	Length	Item No.
marSIGHT tip			
pointed			
0.3 mm	17 cm/6 1/4"	80-990-17-04	
0.3 mm	20 cm/8"	80-990-20-04	
0.3 mm	23 cm/9"	80-990-23-04	
0.3 mm	25 cm/9 3/4"	80-990-25-04	
marSIGHT tip			
blunt			
0.6 mm	17 cm/6 1/4"	80-991-17-04	
0.6 mm	20 cm/8"	80-991-20-04	
0.6 mm	23 cm/9"	80-991-23-04	
0.6 mm	25 cm/9 3/4"	80-991-25-04	
Standard tip			
blunt			
1.0 mm	17 cm/6 1/4"	80-992-17-04	
1.0 mm	20 cm/8"	80-992-20-04	
1.0 mm	23 cm/9"	80-992-23-04	
1.0 mm	25 cm/9 3/4"	80-992-25-04	
Standard tip			
blunt			
2.0 mm	17 cm/6 1/4"	80-993-17-04	
2.0 mm	20 cm/8"	80-993-20-04	
2.0 mm	23 cm/9"	80-993-23-04	
2.0 mm	25 cm/9 3/4"	80-993-25-04	



Example illustration

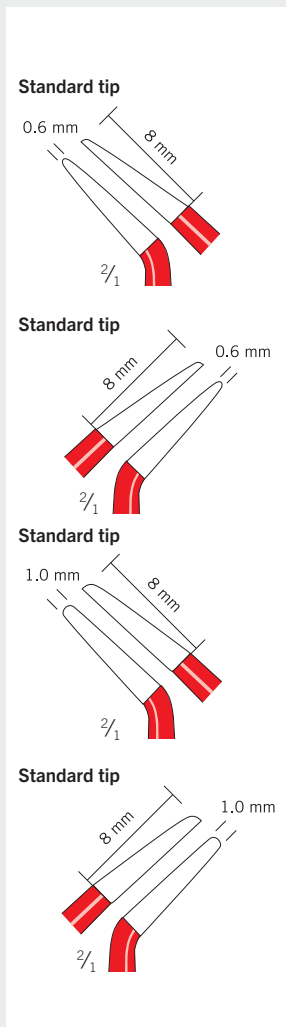


upward-bent

downward-bent

revolutionary
ergonomic
design

Bipolar forceps, KLS Martin nonStick red, bayonet-shaped, angled



Tip width	Length	Item No.
blunt		
0.6 mm	23 cm/9"	80-997-23-04
0.6 mm	25 cm/9 3/4"	80-997-25-04
blunt		
0.6 mm	23 cm/9"	80-996-23-04
0.6 mm	25 cm/9 3/4"	80-996-25-04
blunt		
1.0 mm	20 cm/8"	80-994-20-04
1.0 mm	23 cm/9"	80-994-23-04
1.0 mm	25 cm/9 3/4"	80-994-25-04
blunt		
1.0 mm	20 cm/8"	80-995-20-04
1.0 mm	23 cm/9"	80-995-23-04
1.0 mm	25 cm/9 3/4"	80-995-25-04

Bipolar forceps,
KLS Martin
nonStick red,
angled



**Connecting cables for bipolar forceps
with angled plugs**



80-291-40-04

4 m/13 ft.

Connecting cable for bipolar instruments
for KLS Martin and Berchtold HF units



80-286-40-04

4 m/13 ft.

Connecting cable for bipolar instruments
for maxium® "e"-version / Erbe HF units ICC
and ACC/VIO



80-293-40-04

4 m/13 ft.

Connecting cable for bipolar instruments
for maxium® "i"-version, ME MB2 "i"-version /
Valleylab HF units

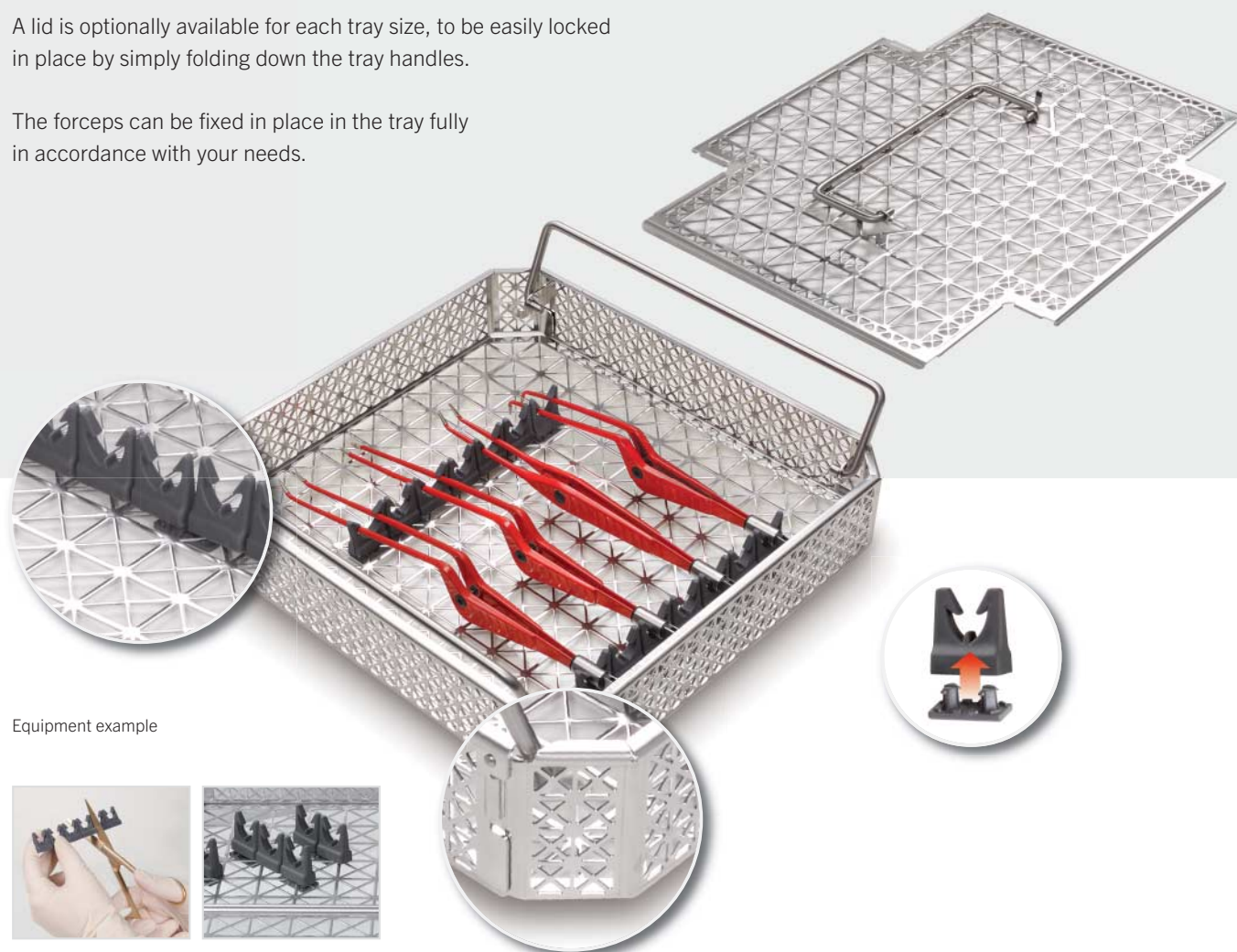


Storage and transport

To store and transport your nonStick red forceps safely and securely, we recommend using the new KLS Martin mesh tray system.

A lid is optionally available for each tray size, to be easily locked in place by simply folding down the tray handles.

The forceps can be fixed in place in the tray fully in accordance with your needs.



Equipment example



Fixing elements are available as 6-item strips with three holding clips. However, you can easily cut up the strips with a pair of scissors – just as you need it.

For forceps with a maximum length of 23 cm, we recommend the following configuration:

Item No.	Designation	Quantity
55-804-25-01	Mesh tray, 243 x 255 x 53 mm	1
55-805-28-01	Lid, 243 x 255 mm	1
Fixing elements		
55-806-02-04	Clip for fixing element (10/pack)	1
55-806-07-04	Fixing element (6/pack)	2

For forceps longer than 23 cm, a ¾-size tray should be used.

Item No.	Designation	Quantity
55-804-42-01	Mesh tray, 410 x 255 x 53 mm	1
55-805-45-01	Lid, 410 x 255 mm	1
Fixing elements		
55-806-02-04	Clip for fixing element (10/pack)	1
55-806-07-04	Fixing element (6/pack)	2



For an overview of the whole range of KLS Martin HF products, please refer to our Catalog "Accessories for electrosurgery".



The respectful treatment of people, society and the environment has always been a matter of course to us. By design, most of our products can be recycled and used over many years, thus saving resources and reducing waste. Environment-friendly and recyclable materials are used also for our production processes, and energy and water consumption monitoring is a top priority as well. A case in point: our largest manufacturing site includes a heat recovery plant for efficient energy utilization. These and many other measures are clear evidence of our environmental commitment.

For further information, please refer to separate GoGreen brochure.

KLS Martin Group

KLS Martin Australia Pty Ltd.

Sydney · Australia
Tel. +61 2 9439 5316
australia@klsmartin.com

KLS Martin India Pvt Ltd.

Chennai · India
Tel. +91 44 66 442 300
india@klsmartin.com

Martin Nederland/Marned B.V.

Huizen · The Netherlands
Tel. +31 35 523 45 38
nederland@klsmartin.com

KLS Martin LP

Jacksonville · Florida, USA
Tel. +1 904 641 77 46
usa@klsmartin.com

KLS Martin do Brasil Ltda.

São Paulo · Brazil
Tel. +55 11 3554 2299
brazil@klsmartin.com

Martin Italia S.r.l.

Milan · Italy
Tel. +39 039 605 67 31
italia@klsmartin.com

Gebrüder Martin GmbH & Co. KG

Moscow · Russia
Tel. +7 499 792-76-19
russia@klsmartin.com

Gebrüder Martin GmbH & Co. KG

Shanghai · China
Tel. +86 21 5820 6251
china@klsmartin.com

Nippon Martin K.K.

Tokyo · Japan
Tel. +81 3 3814 1431
nippon@klsmartin.com

Gebrüder Martin GmbH & Co. KG

Dubai · United Arab Emirates
Tel. +971 4 454 16 55
middleeast@klsmartin.com

KLS Martin France SARL

Mulhouse · France
Tel. +33 3 8951 3150
france@klsmartin.com

KLS Martin SE Asia Sdn. Bhd.

Penang · Malaysia
Tel. +604 505 7838
malaysia@klsmartin.com

KLS Martin UK Ltd.

London · United Kingdom
Tel. +44 1189 000 570
uk@klsmartin.com

Gebrüder Martin GmbH & Co. KG

A company of the KLS Martin Group

KLS Martin Platz 1 · 78532 Tuttlingen · Germany
P.O. Box 60 · 78501 Tuttlingen · Germany
Tel. +49 7461 706-0 · Fax +49 7461 706-193
info@klsmartin.com · www.klsmartin.com

