



**Don't let folds interfere  
with your surgical site**

## Introducing traxi

Predictable. Reliable. Retraction.



## Use traxi for predictable, reliable retraction

Obesity has become a critical issue in surgery<sup>1-3</sup>

Obese women are at increased risk of<sup>1-3</sup>

- Dysfunctional labor
- Subsequent C-section (rates nearing 50%)
- Excessive blood loss
- Operative time greater than 2 hours
- Wound breakdown and infection

Obese patients require specific resources<sup>1-3</sup>

- Additional blood products
- Special bariatric operating beds
- A large operating table
- Extra personnel in the OR
- Attention to the type and placement of the incision

Lifting the panniculus provides access and visualization of the incision site

"The traxi Panniculus Retractor with Retentus Technology is as perfect a solution to the pannus problem as I have ever tried. This product is a winner... a big-time winner."

—James Greenberg, MD. Contemporary OB/GYN. 2015.



**traxi**<sup>TM</sup>  
Panniculus Retractor

## Visualize the incision site and reduce the risk of complications...

### ...Simply

- traxi is quick and easy to apply, reducing expensive OR time

### ...Effectively

- traxi accommodates patients >30 BMI & >50 BMI with the extender

### ...Efficiently

- traxi reduces OR prep time, surgical complexity and additional staffing requirements

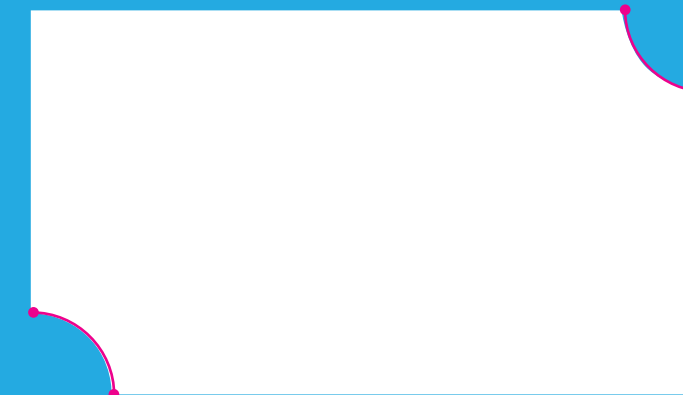
A better experience for you and your patients

### Surgeon Benefits

- Reduces prep time
- Enhances surgical site visualization
- Reduces staff required
- Reduces strain and stress to staff
- Reduces surgical complexity
- Exposes anatomical landmarks

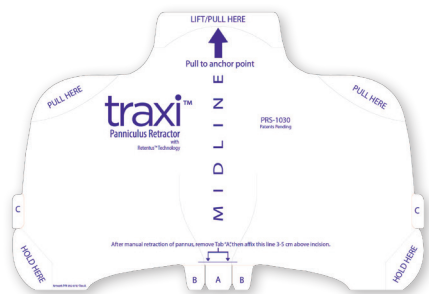
### Patient Benefits

- Improves airflow
- Eliminates potential injury from existing methods
- Maintains dignity



## Ordering Information

	Box	
traxi Panniculus Retractor	PRS-1030	10 ea
traxi Panniculus Retractor-Extender	PRS-1050	10 ea



traxi Panniculus Retractor



traxi Panniculus Retractor-Extender

**For help, please call (888) 268-6222**

See Package Insert for full instructions, warnings, contraindications, and precautions.

This quick reference guide is not intended and should not be used as a substitute for the Package Insert / Instructions For Use.

### References:

1. Bamgbade, O. *World Journal of Surgery*, March 2007; vol 21: pp 556-560. News Release, University of Michigan Health System. CDC web site: "Overweight and Obesity."
2. Committee opinion: Obesity in pregnancy. *The American College of Obstetricians and Gynecologists*. Number 549. January 2013.
3. Alanis MC, Villers MS, Law TL, et al. Complications of cesarean delivery in the massively obese parturient. *Am J Obstet Gynecol*. 2010;203:271.e1-7.

Your Local Distributor:

## 5 steps for better surgical site exposure

### Manual Retraction

- Manually retract panniculus to expose surgical site



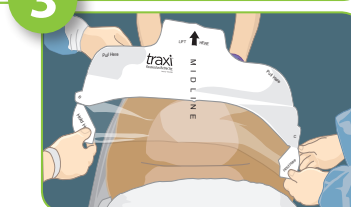
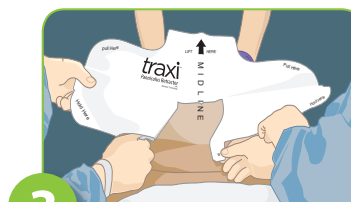
### Remove "A" Tab

- Remove tab "A"
- Position retractor 5cm above incision line
- Align to midline, apply to patient



### Remove "B" Panels

- Remove "B" panels
- Hold in tension while smoothing down onto patient's skin, midline outward



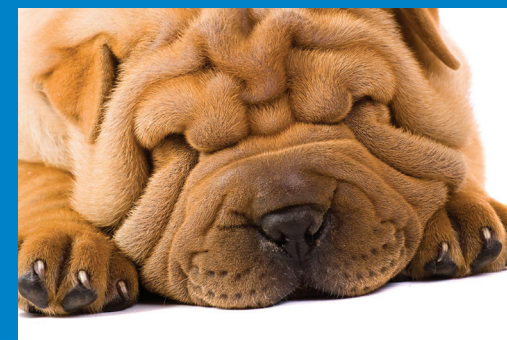
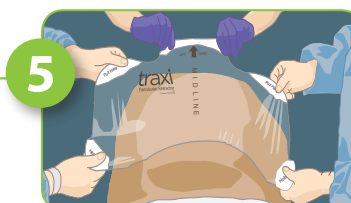
### Relax and Apply

- Retrograde fold device and relax panniculus back to natural position
- Remove "C" panel by simultaneously pulling "C" tabs from each side



### Tension, Lift and Pull

- Together, with tension, lift and pull retractor cephalad
- Anchor at the xiphoid



CLINICAL  
INNOVATIONS

747 West 4170 South  
Murray, Utah 84123 USA  
Phone: 801-268-8200  
Fax: 801-266-7373  
Toll Free: 888-268-6222  
[www.clinicalinnovations.com](http://www.clinicalinnovations.com)

Made in the USA  
Patents Pending  
© Copyright 1-2015

[www.traxiprs.com](http://www.traxiprs.com)

**traxi**<sup>TM</sup>  
Panniculus Retractor