

Koala[®] IUPC

Intrauterine Pressure Catheter

The Koala Intrauterine Pressure Catheter is the only IUPC that has no electronics in the catheter. The external transducer provides easy, true zeroing *in utero*.

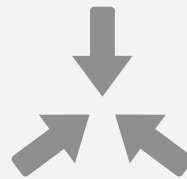


Intrapartum Intrauterine Monitoring



Optimized for Proper Placement

Clear lumen catheter provides visual feedback of proper placement



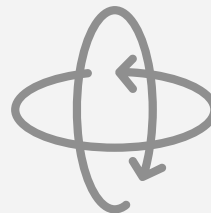
Smaller Tip for Insertion

Koala's small, soft, malleable urethane tip is smaller than transducer-tipped catheters



Easy True Zeroing

With transducer in reusable cable, 'true' zero can be obtained *in utero*

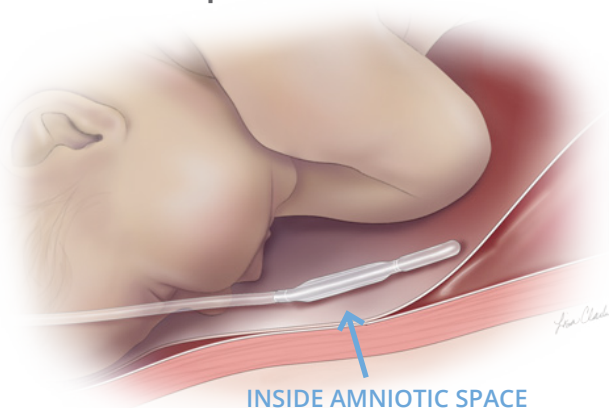


360° Sensing

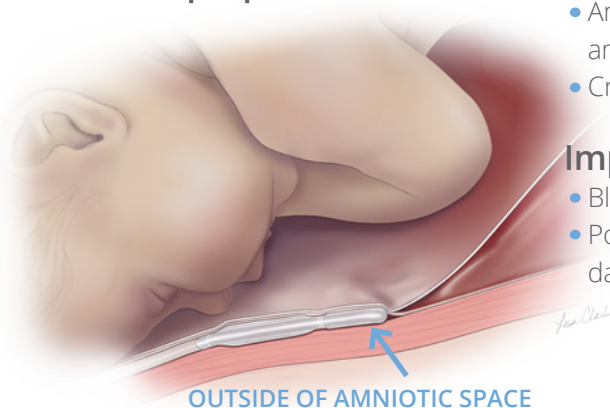
Circumferential sensor provides readings around entire tip of catheter

Proper Placement for Reliable Readings

Proper Placement



Improper Placement



Proper Placement

- Amniotic fluid in amniolumen
- Crisp waveform, good baseline

Improper Placement

- Blood in amniolumen
- Poor readings, high baseline, damped waveform

What is True Zero

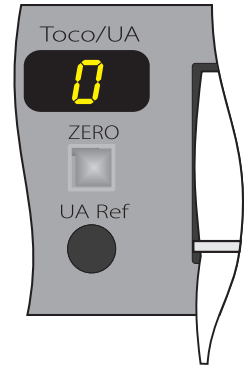
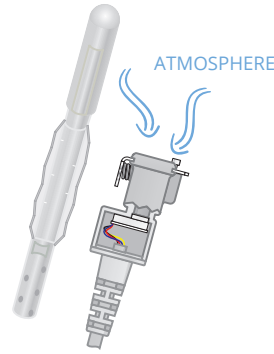
What is Zeroing?

Zeroing is the process of establishing a baseline, or zero, on the fetal monitor from which changes in the intrauterine pressure can be measured.

What is True Zero?

True zero is obtained by pressing the fetal monitor's zero button when, and only when, the systems transducer is exposed to atmospheric pressure.

Koala is the only sensor-tipped catheter that can obtain a true zero while the catheter is *in utero*, because the transducer is located in the reusable cable.



True zero can be obtained anytime by disconnecting catheter from the cable and exposing transducer to atmospheric pressure while zeroing monitor.

Set Up & Use



01

Insert & Pause

Advance Koala 10-14cm and pause for flashback confirmation



02

Advance

Advance Koala until double mark (45cm) is at introitus



03

Plug-In & Zero

Plug-in reusable cable and zero according to monitor instructions



04

Connect & Confirm

Connect Koala to reusable cable, verify functionality

See Package Insert for full instructions, warnings, contraindications, and precautions.

Product Support

Ordering Information

Product Description	Product Code	Box Quantity	Monitor Cables	Product Code	Box Quantity
Koala Intrauterine Pressure Catheter	IPC-5000E	10/ea	Philips 8040A (40V/mmHg)	IPC-5018	1 Cable
			Philips Avalon	IPC-5080	1 Cable
			All other Philips Monitors	IPC-5012	1 Cable
			GE Medical (Corometrics) All Models	IPC-5014	1 Cable
			Air-Shields (Littor) Fetascan 1400	IPC-5016	1 Cable
			Spacelabs Medical (AMS) Spacelabs 94000	IPC-5050	1 Cable
			Neovent Medical Stan S31	IPC-5060	1 Cable
			Edan Instruments, Inc.	IPC-5090	1 Cable

Local Distributor:

clinicalinnovations.com

747 West 4170 South | Murray, Utah USA 84123
Phone 801.268.8200 | Fax 801.266.7373 |
Toll Free 888.268.6222

